

POWERED BY



# INTEGRATED PHOTOVOLTAIC ROOF

THE POWER OF ROOFS



# 1.

## **SOLROOF the integrated photovoltaic roof**

10. **What is SOLROOF?**

12. **How SOLROOF works?**

# 2.

## **Benefits of the SOLROOF integrated photovoltaic roof**

16. **Uncompromising aesthetics in  
harmony with nature**

18. **Comfort is in simplicity**

20. **Innovations that maximise  
efficiency, comfort and safety**

22. **Comprehensive support**

# 3.

## **Technical information**

26. **Technical parameters**

28. **FIT VOLT panel construction**

30. **Common solutions  
- full compatibility**

36. **Dedicated FIT VOLT flashing**

# 4.

## **Information and Contact**

42. **Helpful links**

46. **Contact Us**







**FIT VOLT**



1.

# SOLROOF the integrated photovoltaic roof

10. What is SOLROOF?

12. How SOLROOF works?





CONVENTIONAL  
PHOTOVOLTAICS







**FIT VOLT**



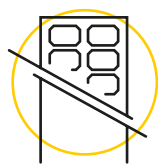
Scan the code  
and find out  
learn more!



# What is SOLROOF?

SOLROOF is an innovative system that was created in response to the growing demand for clean energy. It is the only complete photovoltaic system on the market that is fully integrated into the steel roofing. Proprietary solutions allow for unique aesthetics of the roof and the use of various forms and shapes, which is not possible to achieve in the case of a conventional photovoltaic installation. The combination of FIT sheet metal panels and integrated FIT VOLT photovoltaic panels creates a coherent, harmonious coverage surface.

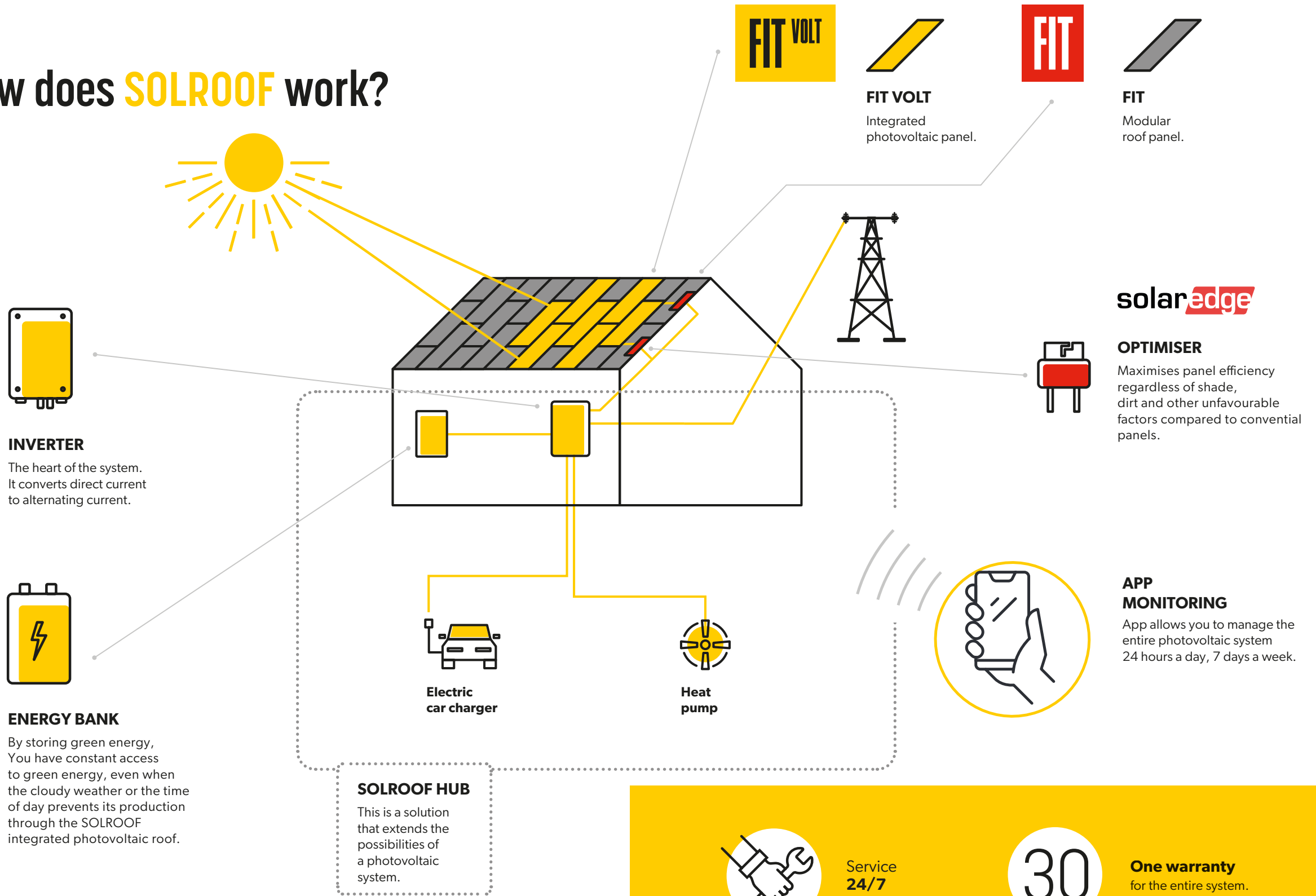
The SOLROOF integrated photovoltaic roof represents new quality that, as the first on the market, offers architects unlimited design possibilities, roofers easy and quick installation and the investor a unique visual effect, efficiency and safety of use. We achieve this by using one product, one assembly, one warranty, and one service.



The model of the integrated SOLROOF photovoltaic system is the subject matter of the invention submitted to the Patent Office of the Republic of Poland and the European Patent Office.



# How does SOLROOF work?







**FIT VOLT**



# 2.

## **Benefits of the SOLROOF integrated photovoltaic roof**

- 16. **Uncompromising aesthetics in harmony with nature**
- 18. **Comfort is in simplicity**
- 20. **Innovations that maximise efficiency, comfort and safety**
- 22. **Comprehensive support**



# Uncompromising aesthetics in harmony with nature

The SOLROOF system has been designed with care for the highest quality of roofing aesthetics. FIT VOLT integrated photovoltaic panels are perfectly visually matched to modular FIT roof panels, which were created in accordance with the idea of minimising the carbon footprint using green steel.



## Attractive appearance

Elegance at the highest level has been combined with innovative technology and the lightness of SOLROOF integrated photovoltaic panels. Using a modern solution, we eliminate unattractive, heavy photovoltaic panels, along with the visible mounting structure and cabling which we know from standard solutions. SOLROOF technology is fully compliant with construction standards, ensuring a high quality of use of the entire building.



## Consistency of form

FIT VOLT integrated photovoltaic panels have been designed to perfectly match the FIT modular roofing. We have eliminated unsightly panel frames, silver paths and visible joints. Thanks to the SOLROOF system, the entire surface of the roofing presents an ideal, undisturbed form.



## Green Steel

When designing the SOLROOF system, we strived to minimise the amount of plastic in line with the needs of the natural environment. Green Steel and other materials used in the panels are effectively recycled, giving other products a second life.



## Sustainable production

SOLROOF is manufactured from the highest quality materials in the European Union, in accordance with EU directives aimed at creating sustainable infrastructure and achieving zero-emission buildings. To this end, we actively participate in the work of the Key Cluster "Sustainable Infrastructure", and we test the created solutions in independent centres such as CBONIT.







system  
assembly  
warranty  
service

## Comfort is in simplicity

We want our customers to receive transparent information about the conditions of use of the SOLROOF system, which led to in the development of the All-in-One system.



### One system

Now, the roof and the photovoltaic system are one. The SOLROOF comprehensive photovoltaic system includes integrated FIT VOLT integrated photovoltaic panels, FIT modular roof panels, optimisers and SolarEdge system components.

**solar**edge



### One assembly

In SOLROOF, we value short assembly time. Thanks to the modularity of FIT VOLT and FIT panels, the installation is quick and carried out by authorised roofers.



### One warranty

Thanks to the integrated SOLROOF solution, the roof is covered by a single manufacturer's warranty. In addition, the need to damage the roof, which takes place during the installation of standard photovoltaic panels, is excluded - your guarantee remains safe.



### One service

In emergency situations, maintenance services are carried out by our authorised roofers, without the need to identify contractors responsible for assembly errors at individual stages.



The warranty becomes valid upon registration at [www.warranty.bp2.eu](http://www.warranty.bp2.eu)  
Detailed warranty conditions are specified in the warranty certificate.



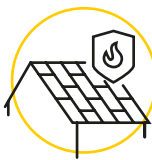
# Innovations that maximise efficiency, comfort and safety

When creating SOLROOF, the most important goal was to ensure maximum system efficiency. For this purpose, the installation is based on proven SolarEdge solutions.



## Maximum performance

Thanks to SolarEdge optimisers, you can enjoy the maximum efficiency of the panels regardless of shade or dirt that, in traditional photovoltaic panels, reduce the efficiency of the entire installation.



## Safety of assembly and use

The Safe DC™ function minimises the risks caused by power surges and lowers the operating temperature of the panels, thus extending their life. All wiring related to the installation is located under the roof covering in dedicated steel profiles. Optimisers are mounted at the edge of the roof for easy access.



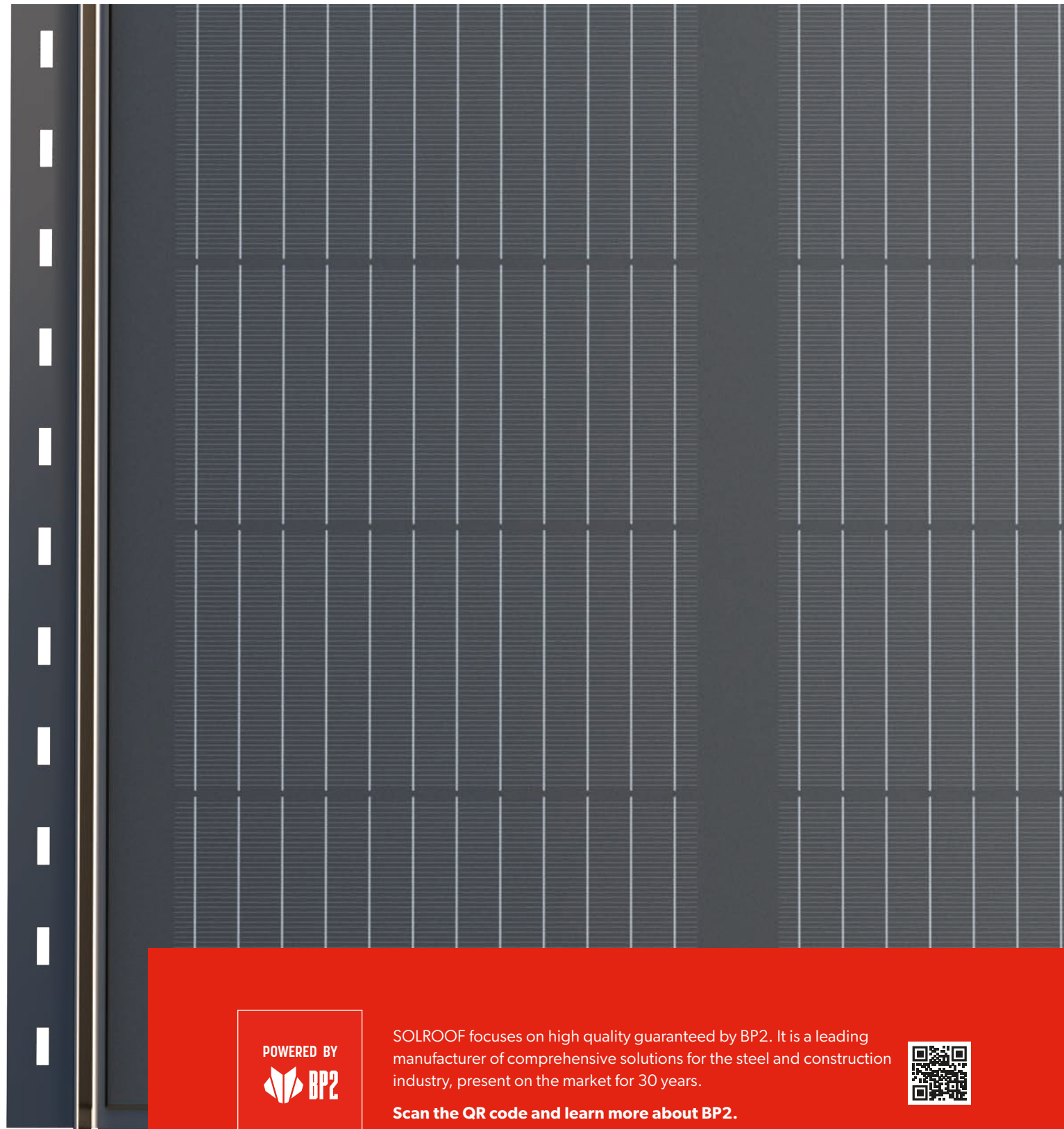
## Ease of use

Constant monitoring of the functioning of the roof is carried out by an intuitive and easy-to-use mobile application. It allows real-time tracking of information on the energy obtained from the roof and what is used by the facility.



## High durability

FIT VOLT integrated photovoltaic panels have a high resistance to weather conditions, successfully passing the hail ball impact test carried out in accordance with the **international standard IEC 61215**.



SOLROOF focuses on high quality guaranteed by BP2. It is a leading manufacturer of comprehensive solutions for the steel and construction industry, present on the market for 30 years.

**Scan the QR code and learn more about BP2.**

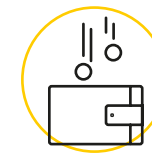






## Comprehensive support

We care about the comprehensiveness of our solutions, caring for the convenience of our customers. The solutions we propose significantly improve and increase the ease of the use of the SOLROOF system, extend its capabilities and protect against unforeseen random events.



### Government funding

Our advisors will support you at every stage in the process of obtaining subsidies for the integrated system of SOLROOF panels, as well as in the process of reporting installations to the power company. In addition, if the investment is the basis for thermal modernisation of a building, we can help you to obtain a tax relief.



### Insurance

Thanks to the use of proprietary design solutions and innovative SolarEdge elements, we are sure that the offered SOLROOF system is safe and thus meets the high requirements set by insurance companies. The first integrated photovoltaic roofs are certified by independent institutions such as CBOiNT.

**solar**edge



### SOLROOF Hub

SOLROOF Hub is a solution that extends the possibilities of a photovoltaic system. It enables homeowners to meet their needs by easily connecting to a growing ecosystem of devices such as power banks, heat pumps, and electric vehicle chargers.



### SOLROOF Care

This is an extended warranty option under which we offer a comprehensive package of technical support services and dedicated assistance for users, including: post-warranty and service care, dedicated installation monitoring and support from SOLROOF experts.





# 3.

## Technical information

26. **Technical parameters**

28. **FIT VOLT panel construction**

30. **Common solutions - full compatibility**

36. **Dedicated FIT VOLT flashing**

**FIT VOLT**

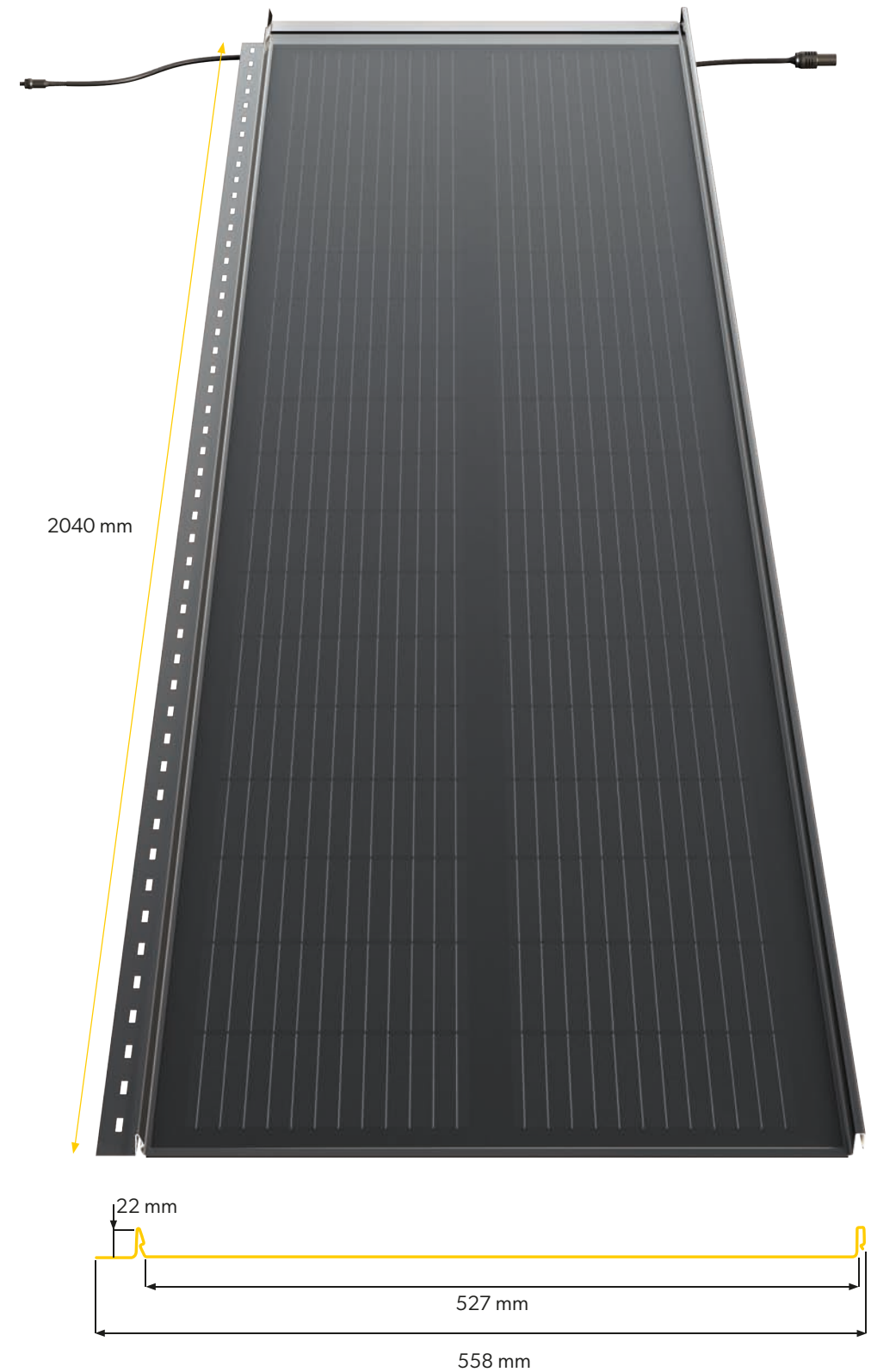


# Technical information

## FIT VOLT

### Technical parameters

Number of cells	36
Rated power [W]	175
Idle voltage [V]	24
Seam height [mm]	22
Total width [mm]	558
Effective width [mm]	527
Sheet thickness [mm]	0,5
Sheet length [mm]	2040
Overlap length when dividing sheets [mm]	30
Roof inclination	>15°



You can find this product in our BP2 BIM library for architects and designers at [www.bp2.eu/en/architects/](http://www.bp2.eu/en/architects/)

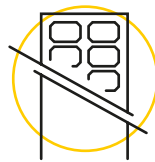




# FIT VOLT panel construction

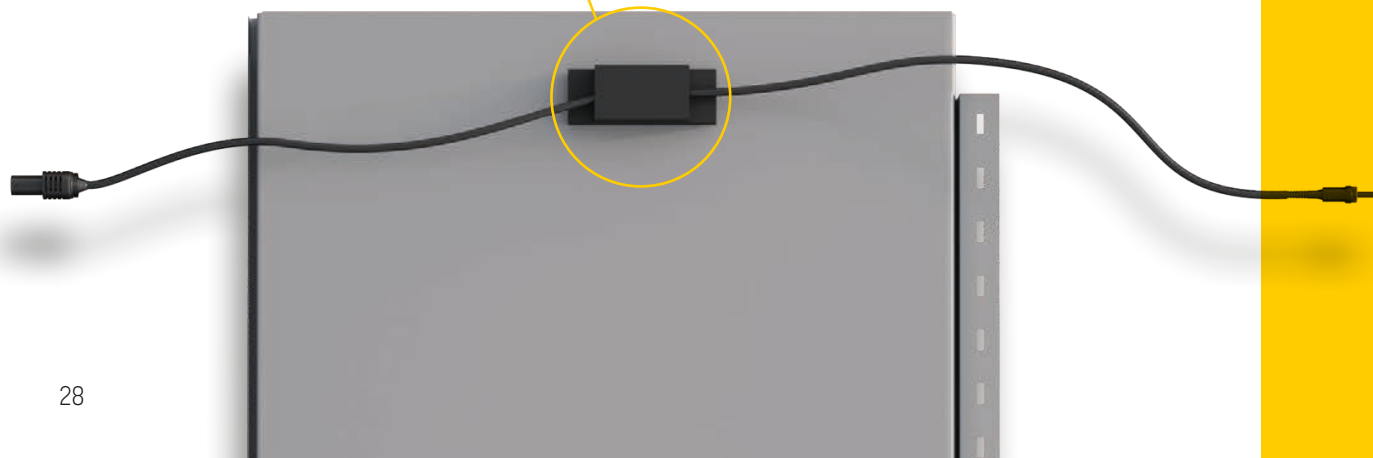
FIT VOLT is a modular roof panel integrated with monocrystalline photovoltaic cells (BIPV), which stands out from typical heavy and unsightly photovoltaic panels. It is lighter and perfectly inscribed into roof surface thanks to the elimination of visible frames.

Due to our asymmetric connection, the length of cables is appropriately adjusted to the panels, which makes the installation easier, and the wiring does not require additional shortening.



The model of the integrated SOLROOF photovoltaic system is the subject matter of the invention submitted to the Patent Office of the Republic of Poland and the European Patent Office.

## J-BOX AND ASYMMETRIC CONNECTION CABLES



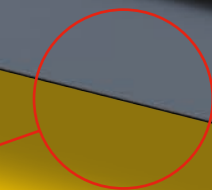
OPTIMISER  
**solar**edge



PHOTOVOLTAIC  
CELLS



MODULAR  
ROOF  
PANEL

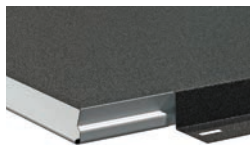




# Common solutions - full compatibility

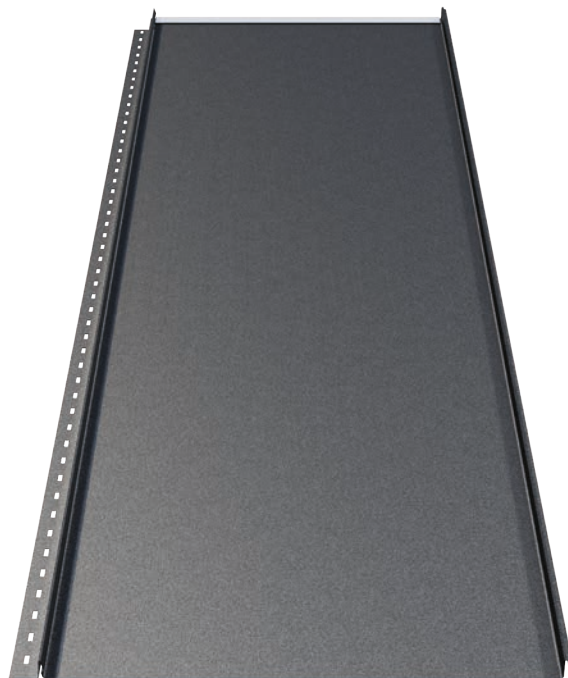
FIT VOLT was created with roofers in mind. It has all the features valued in a traditional FIT modular panel. Both products can be freely combined with each other, creating a uniform and elegant roof surface.

Using the SOLROOF system, all the wiring is aesthetically placed under the cover - there is no need to disturb the existing ventilation ducts and chimney shafts. In effect, the assembly and installation are much safer than standard photovoltaic panels. The aesthetics of the integrated SOLROOF system is complemented by dedicated flashings that increase the quality of the finish and the ease of assembly.



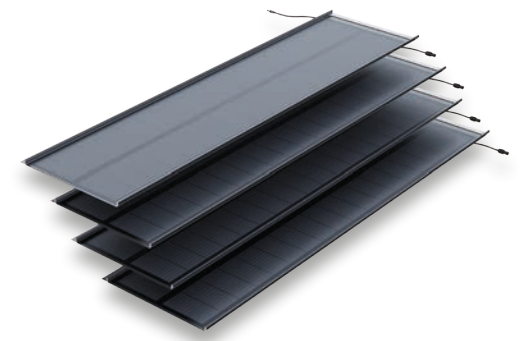
## EASY LINK

This proprietary solution consists of cutting out the corner of the embossing to avoid overlapping the layers of sheets at the connection point. In addition, a specially shaped profile of extreme ribs allows the sheets to fit together perfectly without visible longitudinal joints.



## BEND LOCK

Folding the panel at the eave part of the roof conceals and protects the cut edge and eliminates the need to install screws. In addition, the lower BEND LOCK fold is cut at an angle, which makes it easier to guide and connect the panels along their length.



## MODULARITY

The modularity of FIT VOLT and FIT panels has many advantages. It enables easier transport and storage and significantly speeds up assembly, which reduces the costs resulting from the time of investment implementation.



For more information on the FIT modular roof panel, visit [www.fit.bp2.eu](http://www.fit.bp2.eu)



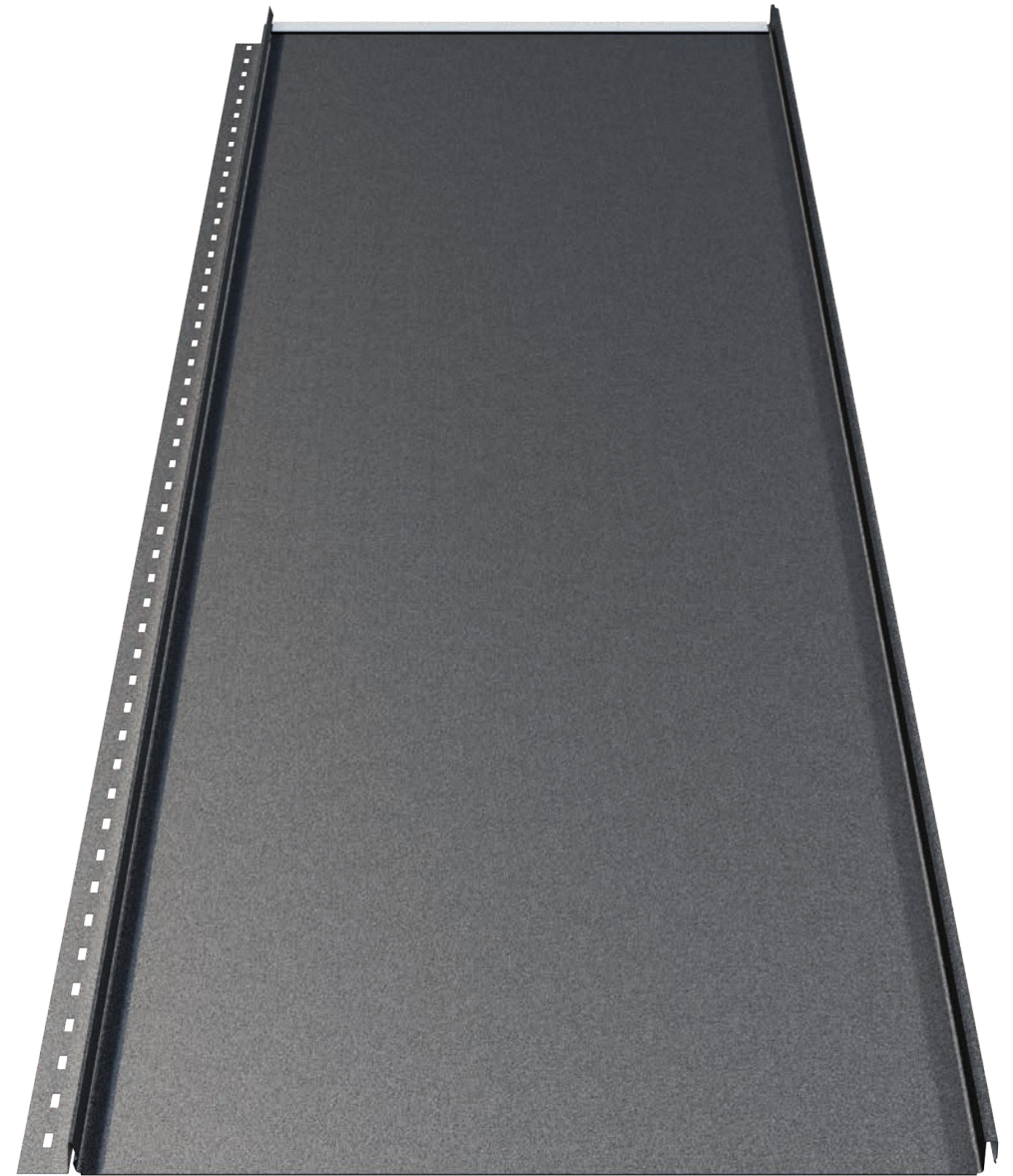


# **FIT VOLT** **integrated** **photovoltaic** **roof panel** **vs FIT modular** **roof panel**



**FIT VOLT INTEGRATED PHOTOVOLTAIC ROOF PANEL**

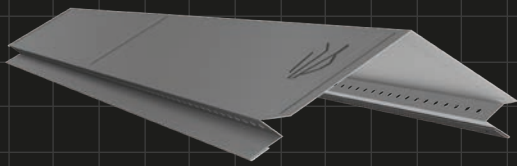
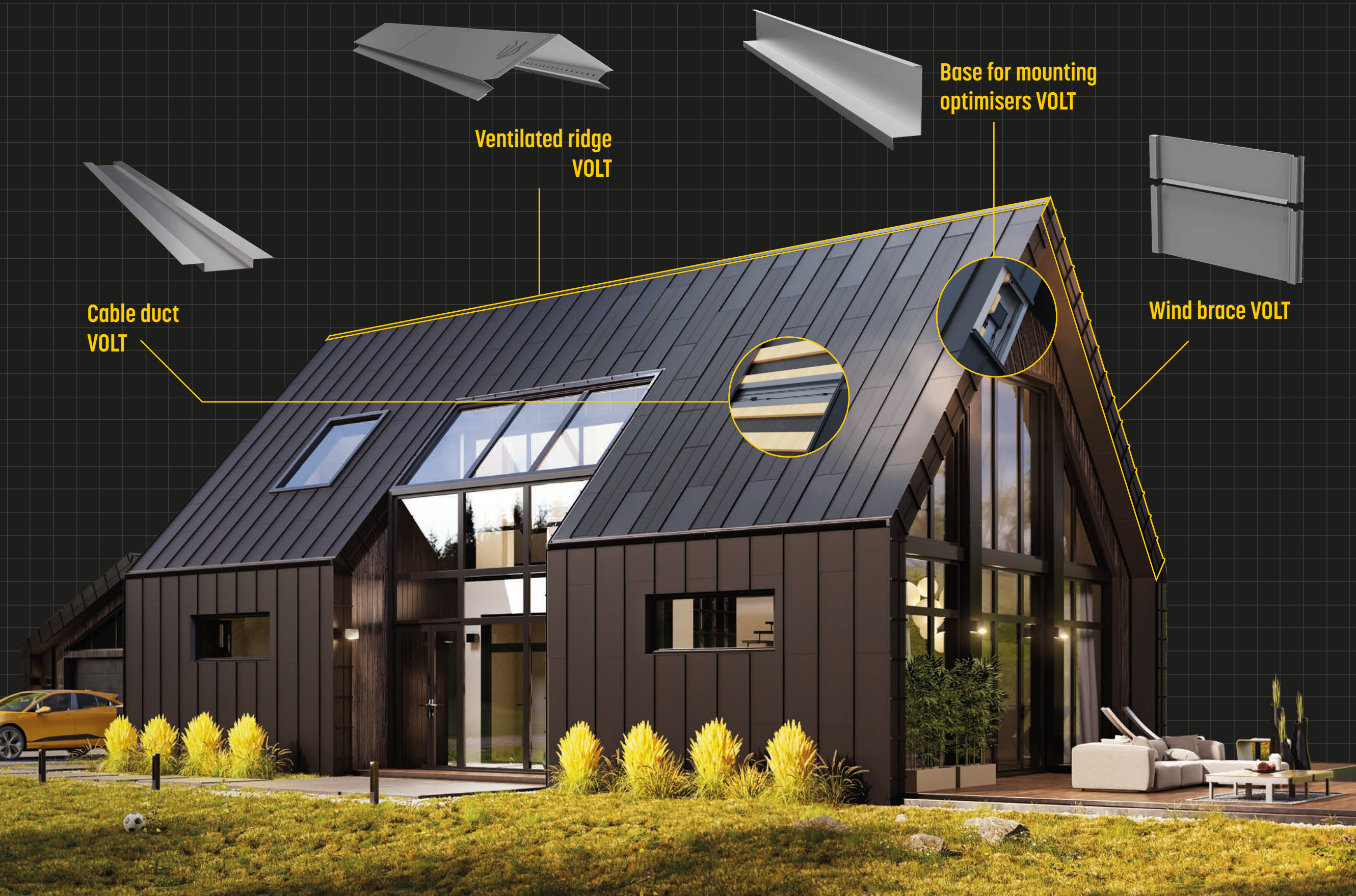




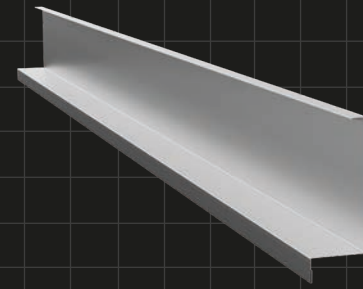
**FIT MODULAR ROOF PANEL**



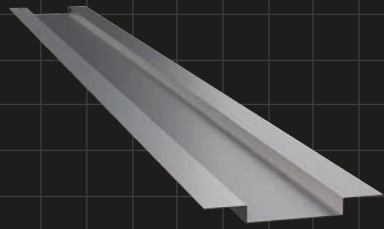




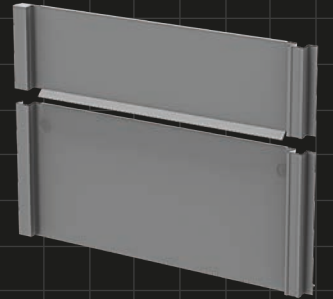
Ventilated ridge  
VOLT



Base for mounting  
optimisers VOLT



Cable duct  
VOLT



Wind brace VOLT





# Dedicated FIT VOLT flashings

Ridge tiles and flashings are an inseparable element of any properly made roofing. Dedicated flashings for the SOLROOF system protect the integrated photovoltaic roof against the forces of wind and roof leakage. They are made of sheets with the same palette of coatings and colours as our FIT and FIT VOLT panels, thanks to which they guarantee an aesthetic fit.



## Ventilated ridge VOLT

The ventilated ridge tile is a flashing crowning the roof covering at the ridge. The flashing is dedicated to roofing in the SOLROOF system. Its task is to seal as well as aesthetically finish the roof ridge. The biggest advantage of the ventilated ridge tile is the factory-made perforation on the front wall, which allows ventilation of both the roof and the attic without the need to install an additional ventilation strip in the ridge.

-  Factory perforation
-  Modularity
-  ANTI WAVE System
-  Aesthetic fit



## Wind brace VOLT

Flashing dedicated to products in the SOLROOF system, characterised by high aesthetics thanks to invisible screws on its surface. Folding the upper element of the wind brace facilitates installation on the edge of the panel. In addition to protection against the wind, it allows you to hide the wiring. It is also equipped with mounting recesses (purlins), which determine its mounting points on the wind brace board - the mounting screws are not visible, ensuring an elegant finish of the roof. The flashing is available in a right and left version.

-  Covering adjustment
-  Modularity
-  Invisible screws
-  Mounting recesses
-  Aesthetic fit



## Base for mounting optimisers VOLT

It is a dedicated flashing mounted under the VOLT wind brace allows for safe installation and easy access to SolarEdge optimisers and convenient cabling. It limits accessibility for rodents and martens, thus increasing the quality of securing cable routes. To ensure high safety of the entire SOLROOF installation, it is made of galvanised steel.



## Cable duct VOLT

Dedicated flashing for FIT VOLT panels mounted between the boarding. It facilitates convenient and safe installation of connection cables for the SOLROOF system. It limits accessibility for rodents and martens, thus increasing the quality of securing cable routes. Thanks to the well-thought-out narrowing at one of the ends, its design allows for convenient connection of flashings along the boarding. To ensure the safety of the entire installation, it is made of galvanised steel.

## A complete range of flashings and accessories



Listening to the comments of roofing specialists, we have created flashings that will noticeably facilitate and speed up the work and help avoid technical errors.

A complete range of flashings and accessories can be found at [www.bp2.eu](http://www.bp2.eu)







**FIT VOLT**



# 4.

## Information and Contact



42. **Helpful links**



46. **Contact Us**





# Helpful links

 SOLROOF website 



 SOLROOF catalogue 

 SOLROOF installation manual 

 Warranty registration 



 [facebook.com/solroof.eu](https://facebook.com/solroof.eu) 

 [instagram.com/solroof.eu](https://instagram.com/solroof.eu) 

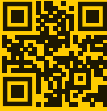
 [linkedin.com/company/bp2eu](https://linkedin.com/company/bp2eu) 

 [youtube.com/@BP2eu](https://youtube.com/@BP2eu) 





**FIT VOLT**



Scan the code  
and find out  
learn more!



# Contact Us



## SOLROOF Call center

# 800 707 137



- Distributors
- Sales representatives
- Authorized contractors
- Technical consultancy



ul. Budowlanych 10  
41-303 Dąbrowa Górnicza

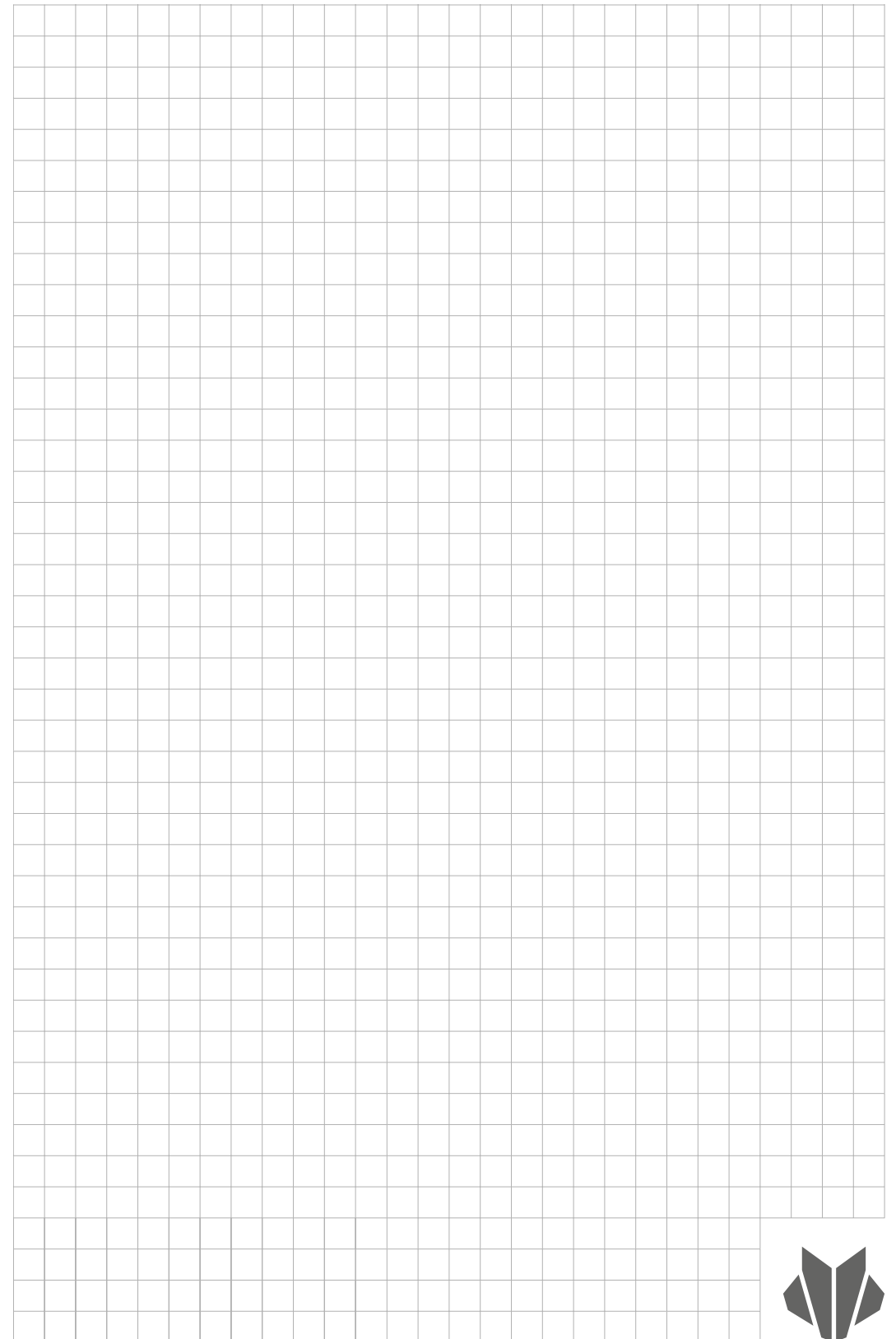
[www.solroof.eu](http://www.solroof.eu)



All numerical values and physicochemical characteristics of the products given in the catalogue are indicative and illustrative. The company does not assume any responsibility for any errors or mistakes in editing and printing as well as reserves the right to make changes to product specifications.



This catalog does not constitute an offer within the meaning of the Civil Code.  
Copyright © 2023 SOLROOF. All rights reserved.







Modular roofing tiles  
**MODULAR SERIES**



Compact roofing tiles  
**COMPACT SERIES**



Steel roofing tiles  
**CLASSIC SERIES**



Retro roof tiles  
**RETRO SERIES**



Roof panels  
**PANEL SERIES**



INTEGRATED  
**PV PANELS**



Steel roof gutter system  
**INGURI**



**TRAPEZOIDAL**  
SHEETS



**FLAT METAL**  
SHEETS



**FLASHINGS**



**ACCESORIES**



**Roof Sandwich**  
PANELS



**Wall Sandwich**  
PANELS



Facade cladding  
**SKRIN, LINEA, SINUS**



Wall cassette &  
**PROSYSTEM**



Slitting and recoiling  
**SERVICES**



Cut to length  
**SERVICES**



**PERFORATION**  
of sheets